

Sediment images (Whole view picture):

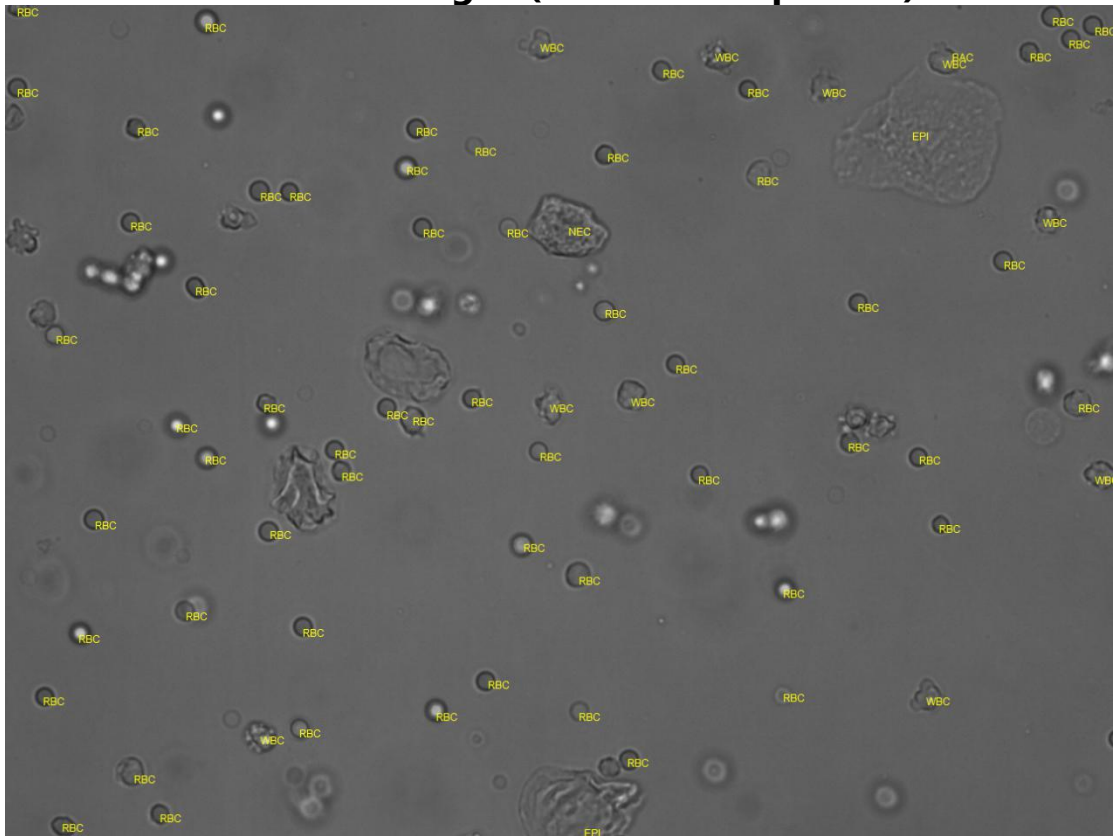


Figure 1: White blood cells, red blood cells, and epithelial cells

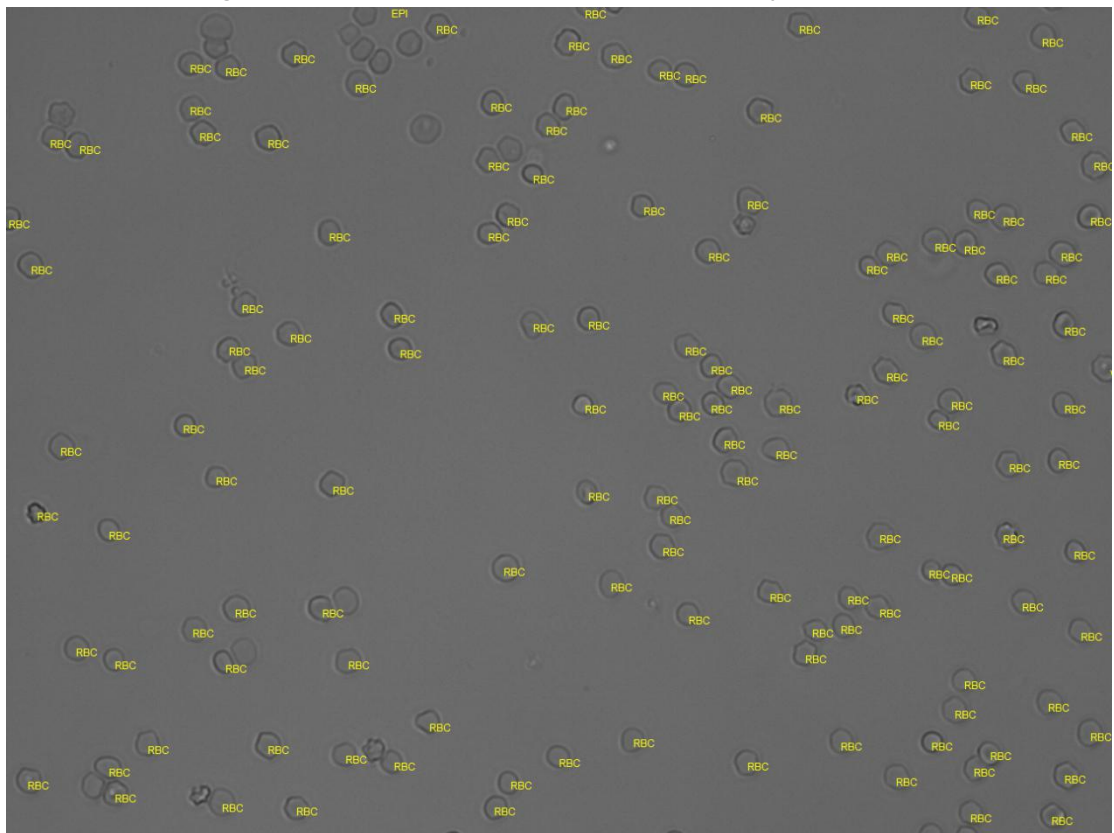


Figure 2: Red blood cells

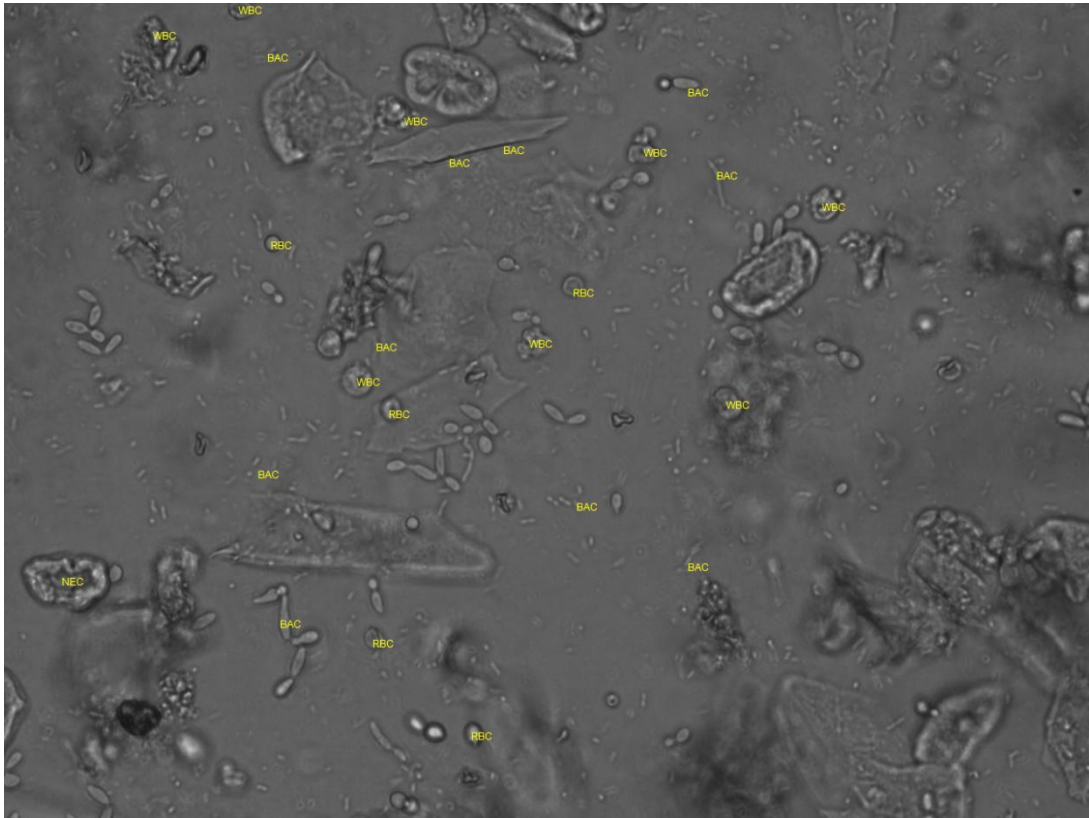


Figure 3: Erythrocyte, leucocyte, bacterium, squamous cell

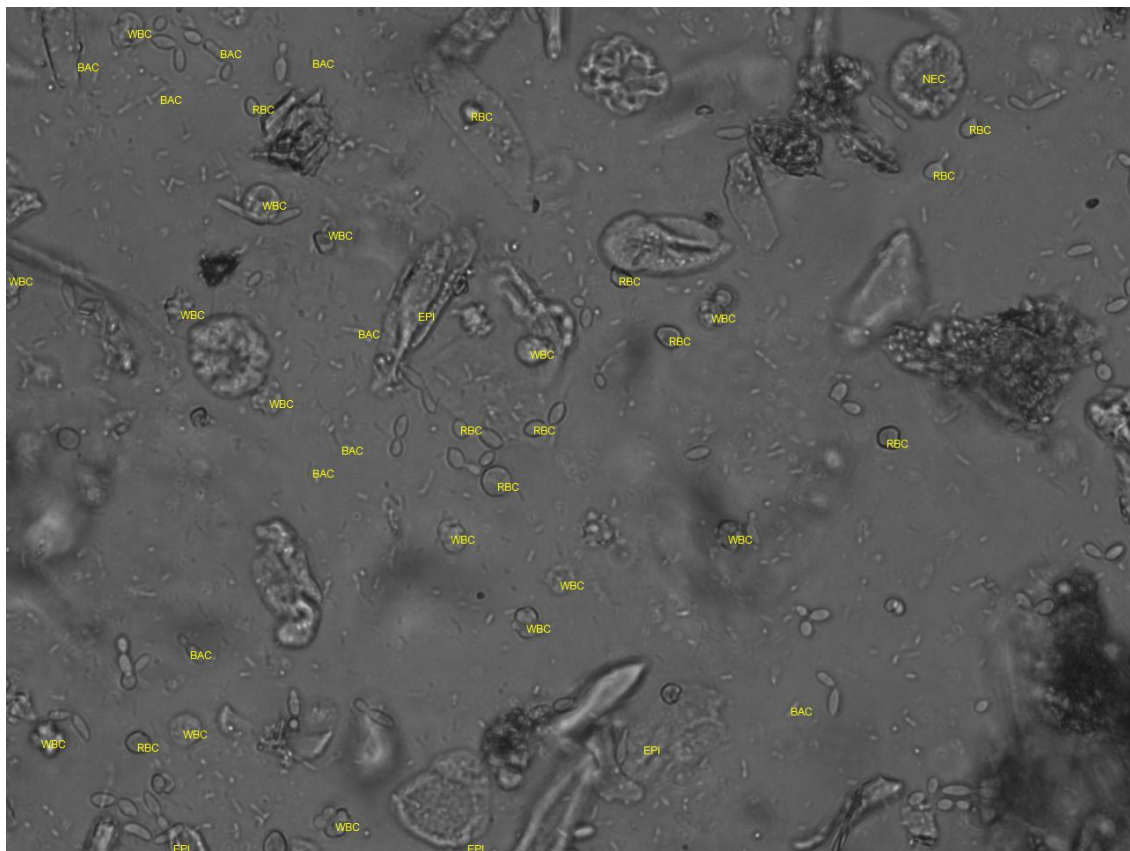


Figure 4: Leukocytes, Erythrocytes, Bacteria, Non-squamous Cells, Squamous Cells